

# SPRINGVILLE TOWNS



## UNIT B

**Total Square Footage** 1615

**Finished Bedrooms** 3

**Finished Bathrooms** 2 ½

**Quartz countertops throughout**

**Custom cabinetry**

**9' ceilings on the main**

**Luxury vinyl tile flooring**

**½ bath with pedestal sink**

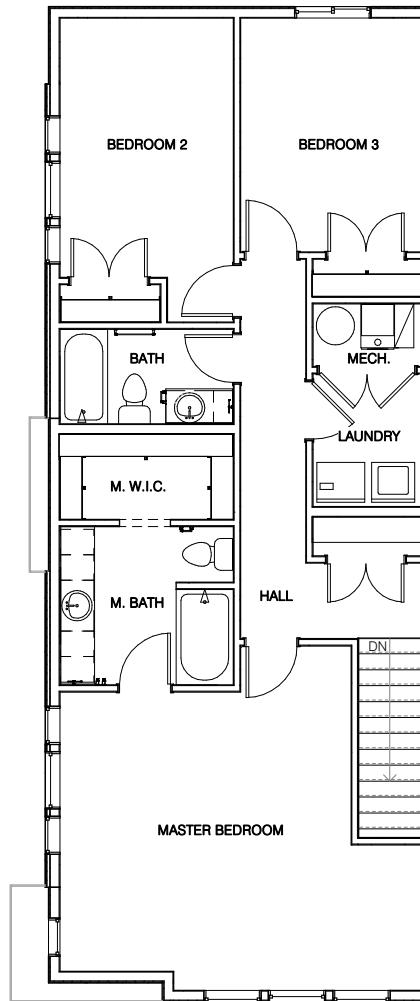
**Large primary bath**

**Large walk-in closet**

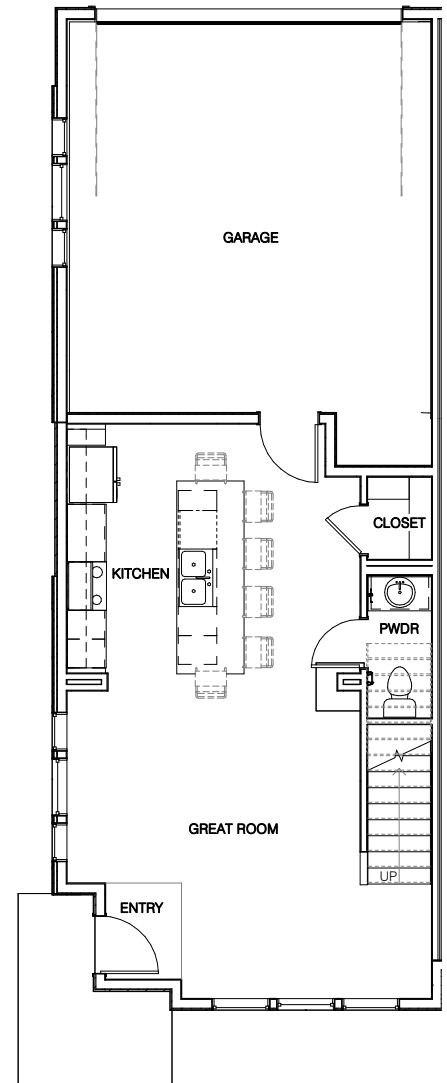
**Finished laundry room**

**2-car garage**

Upper Level



Main Level



All renderings are artists' conception. Continuing a policy of constant design and pricing improvement, we reserve the right of price, product or design change without obligation to notify.

801.836.8424

See more at [jthomashomes.com](http://jthomashomes.com)