

WENZEL



Total Finished Square Footage 1936

Large master bedroom with ensuite bathroom and walk-in closet

Optional storage room in extra deep tandem garage

Finished Bedrooms 3

Optional 456 sq ft bonus room above the garage

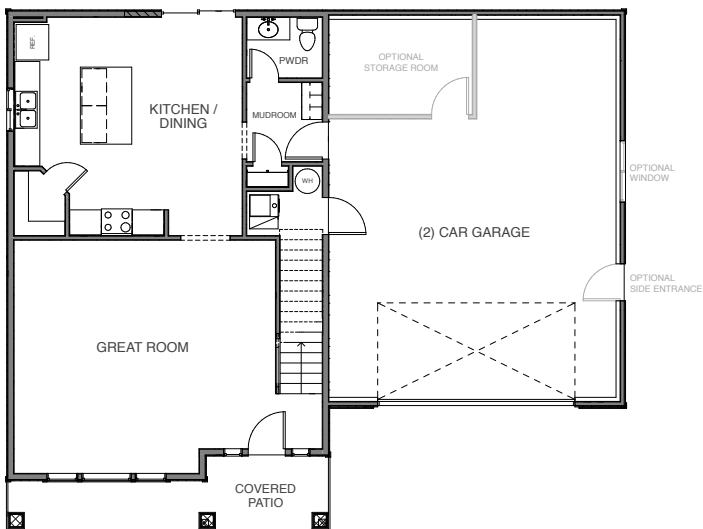
Optional double sinks in master bath

Finished Bathrooms 2 1/2

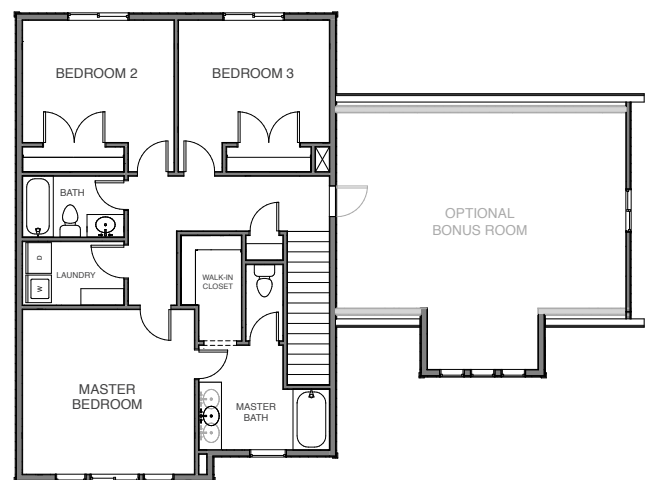
Optional kitchen layout with 10' kitchen island

Optional 3-car garage

Main Level



Upper Level



All renderings are artists' conception. Continuing a policy of constant design and pricing improvement, we reserve the right of price, product or design change without obligation to notify.

801.383.1911
See more at jthomashomes.com