

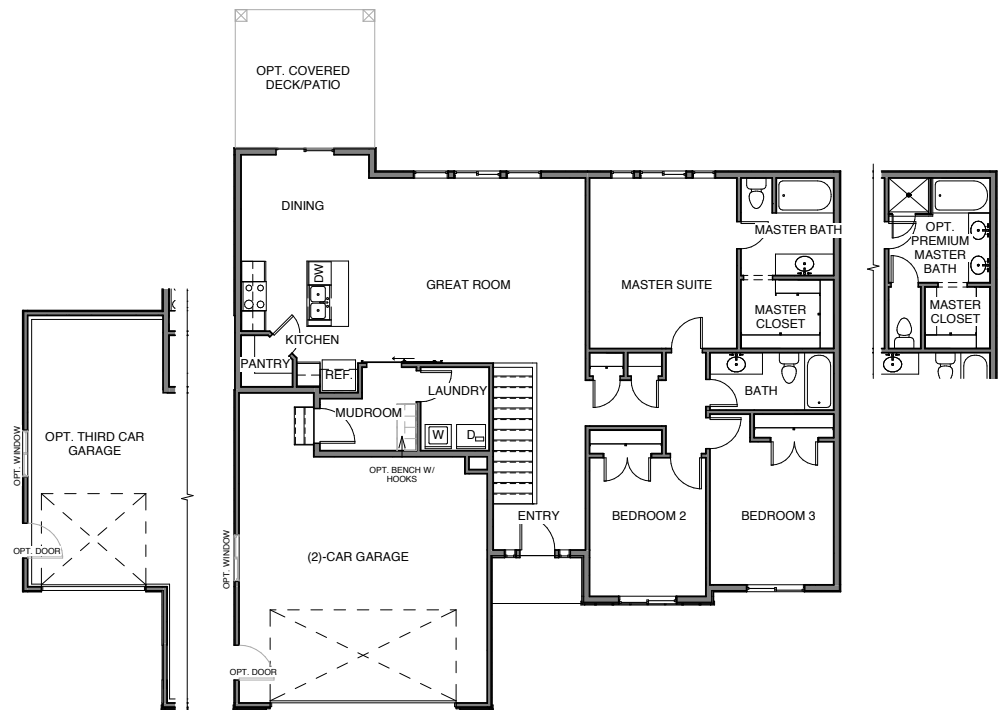
MADISON



The Madison is an exciting new plan for a move-up buyer! It includes three bedrooms, two bedrooms and an optional 3 car garage. You'll love the spacious kitchen, great room and master bedroom ensuite. This plan also includes 9-foot ceilings on the main floor. The plan could also include vaulted ceilings in the master bedroom and kitchen, which really opens up these rooms allowing for plenty of natural light from the generously sized windows! The basement has been designed to give you plenty of room to grow which could include a future family room, storage room, bathroom and three more bedrooms.

Main Level

- Finished Square Footage** 1,595
- Total Square Footage** 3,178
- Finished Bedrooms** 3
- Finished Bathrooms** 2
- 9ft. Ceiling Plate**
- Optional 3-Car Garage**



801-383-1911
See more at jthomashomes.com

All renderings are artists' conception. Continuing a policy of constant design and pricing improvement, we reserve the right of price, product or design change without obligation to notify.

