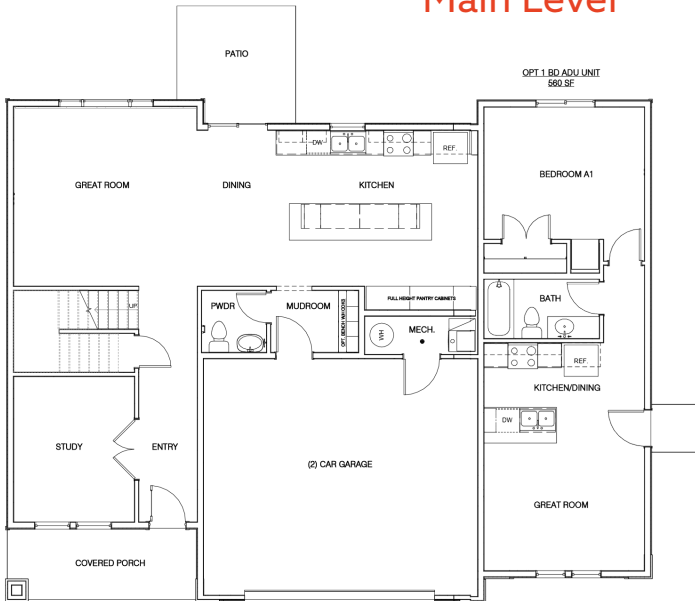


ASPYN WITH ADU

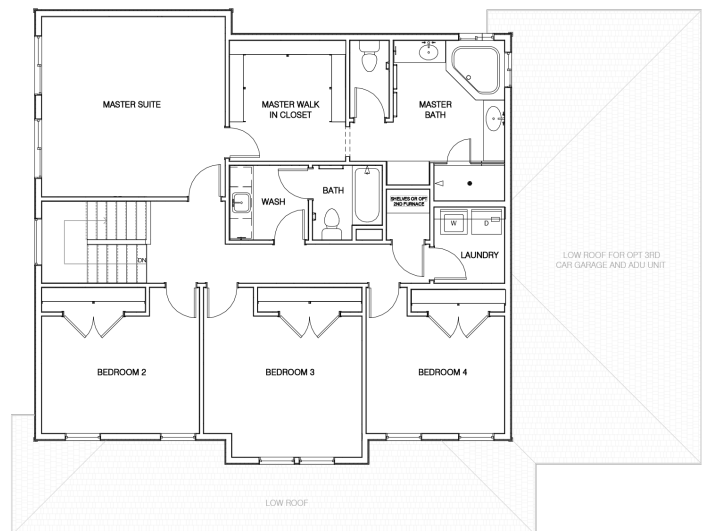


- Total Finished Square Footage** 2982
- Finished Bedrooms** 5
- Finished Bathrooms** 3 1/2
- 560 sq ft ADU with private entrance, full kitchen & bath, & separate bedroom**
- Convenient study/office off of main entry**
- Gourmet kitchen with XL kitchen island**
- Large primary bedroom with ensuite bathroom and walk-in closet**
- Extra large 24' by 24' garage for additional storage**
- Covered front porch**

Main Level



Upper Level



All renderings are artists' conception. Continuing a policy of constant design and pricing improvement, we reserve the right of price, product or design change without obligation to notify.

801.383.1911
See more at jthomashomes.com