

# ASPYN



**Total Finished Square Footage** 2422

**Finished Bedrooms** 4

**Finished Bathrooms** 2 1/2

**Large primary bedroom with ensuite bathroom and walk-in closet**

**Convenient study/office off of main entry**

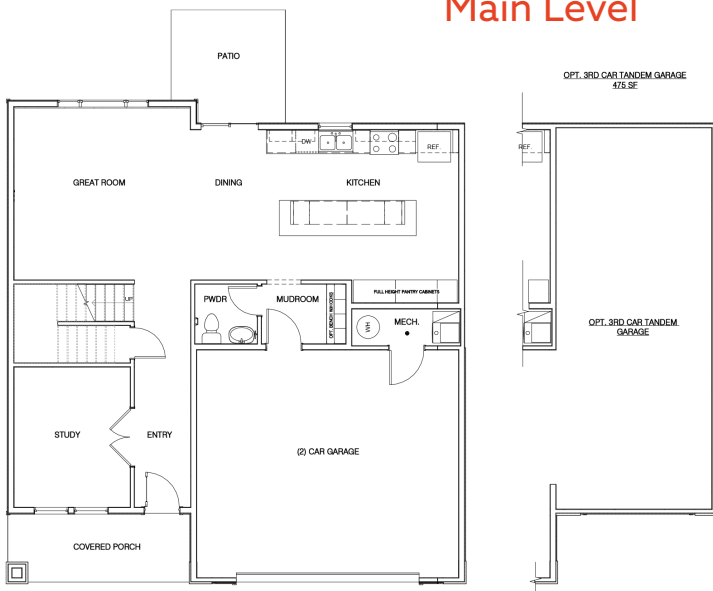
**Gourmet kitchen with walk-in pantry and XL kitchen island**

**Extra large 24' by 24' garage for additional storage**

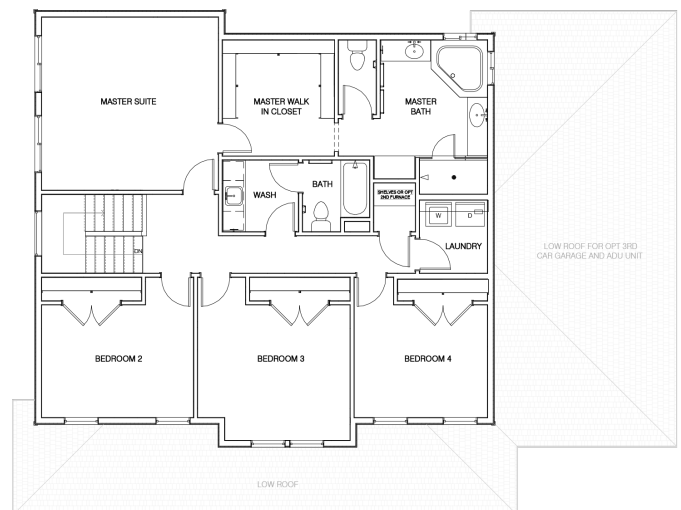
**Optional 3-car tandem garage**

**Covered front porch**

## Main Level



## Upper Level



All renderings are artists' conception. Continuing a policy of constant design and pricing improvement, we reserve the right of price, product or design change without obligation to notify.

801.383.1911  
See more at [jthomashomes.com](http://jthomashomes.com)